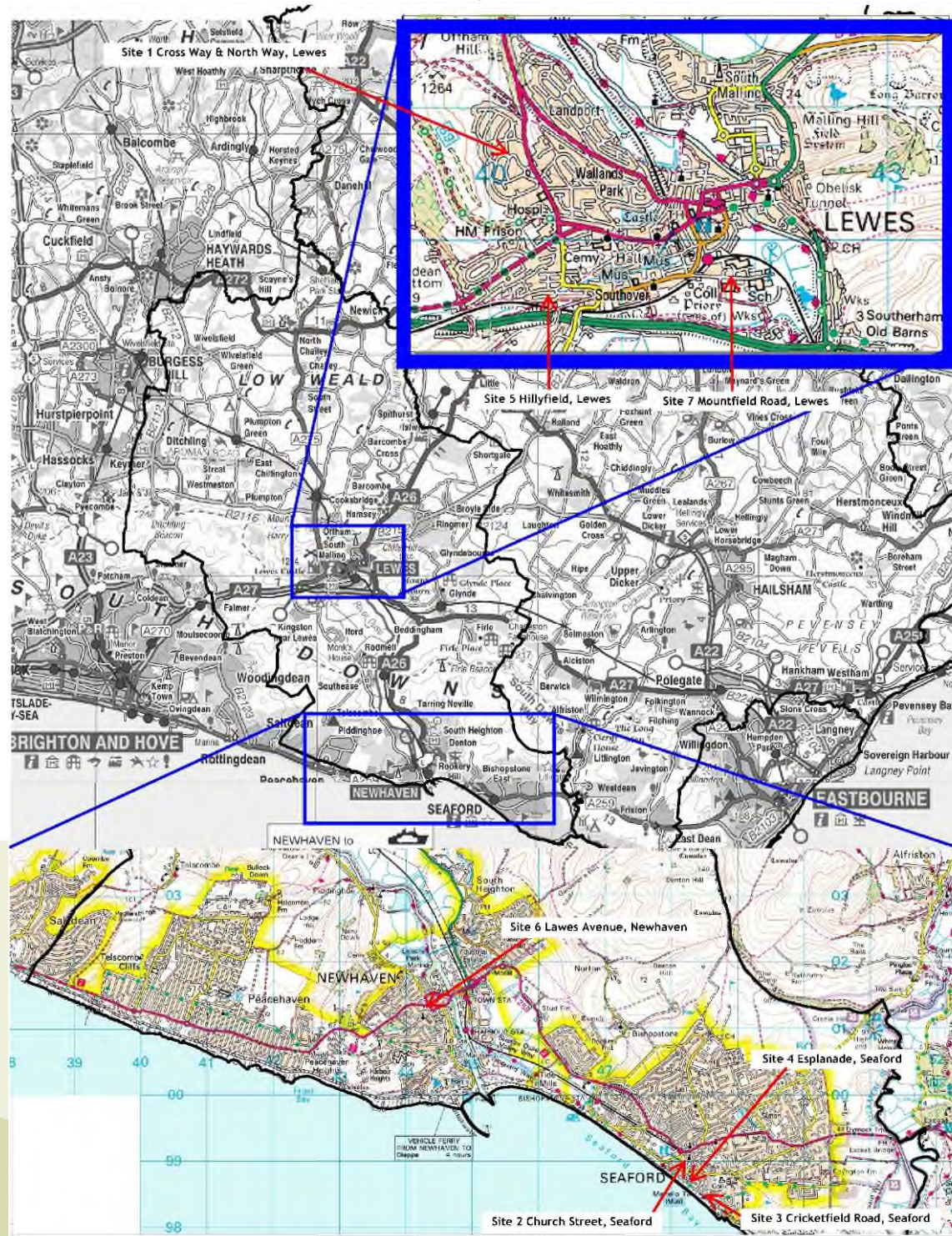


East Sussex County Council Planning Committee 15 February 2023

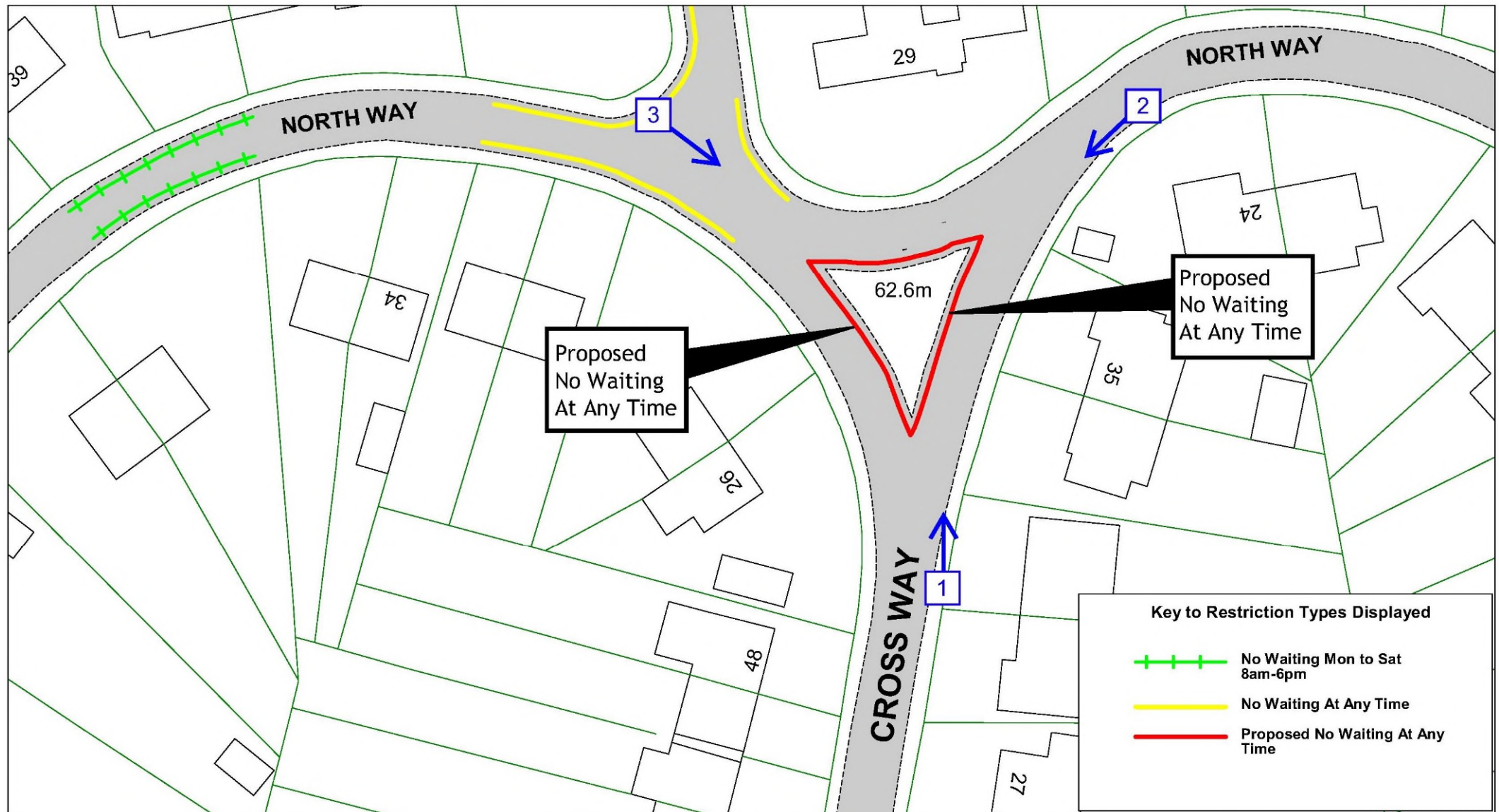
Traffic Regulation Order: Lewes Parking Review 2022

Objections received to changes to parking and waiting restrictions proposed during the latest parking review in Lewes District

Lewes Parking Review 2022 sites attracting objections



Site 1 Cross Way and North Way Lewes



View 1 – Looking north along Cross Way from outside 31 Cross Way



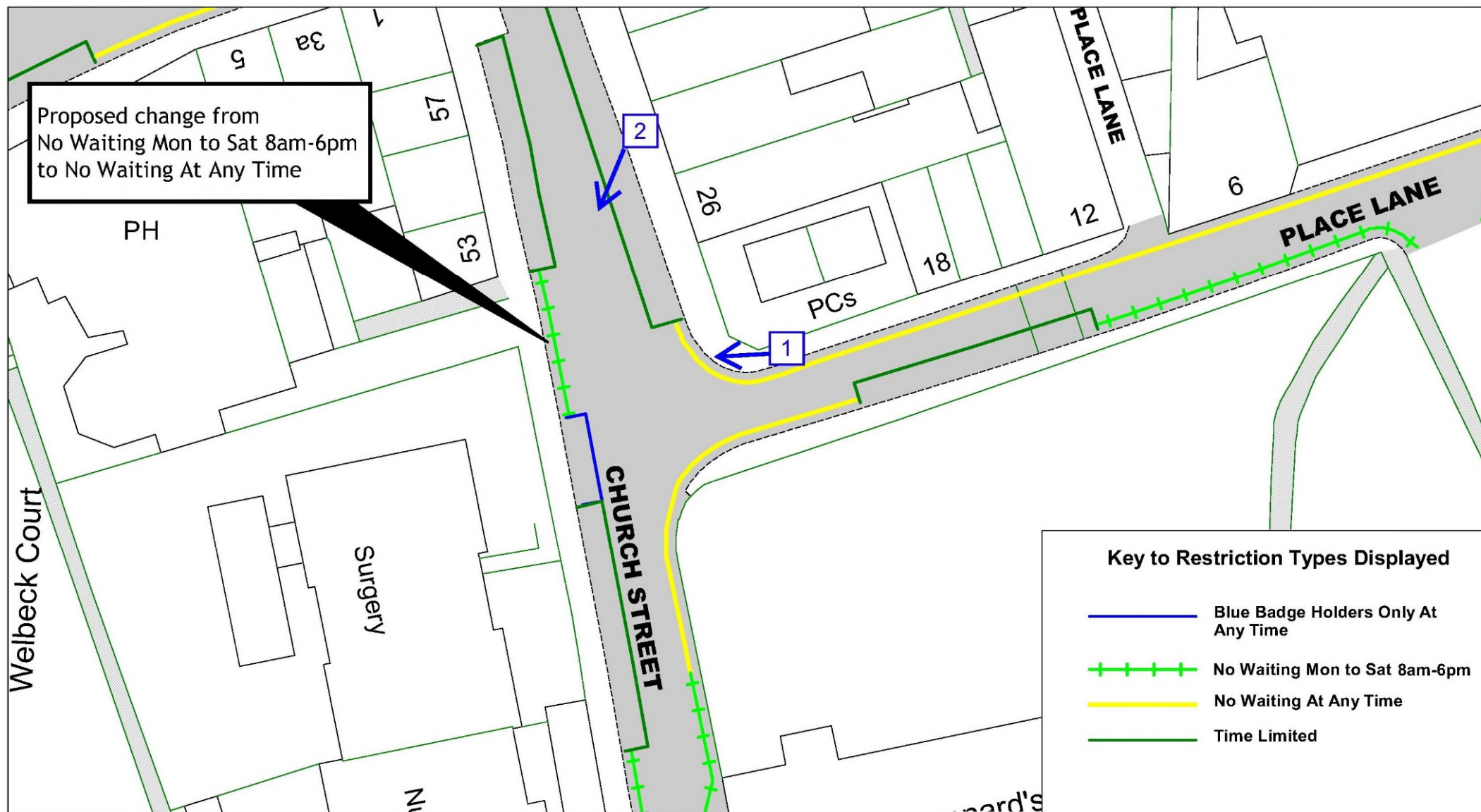
View 2 – Looking south-west across the junction between Cross Way and North Way, from the eastern side of North Way outside number 24



View 3 – Looking south-east across the junction between Cross Way and North Way, from the western side of North Way opposite number 28



Site 2 Church Street Seaford



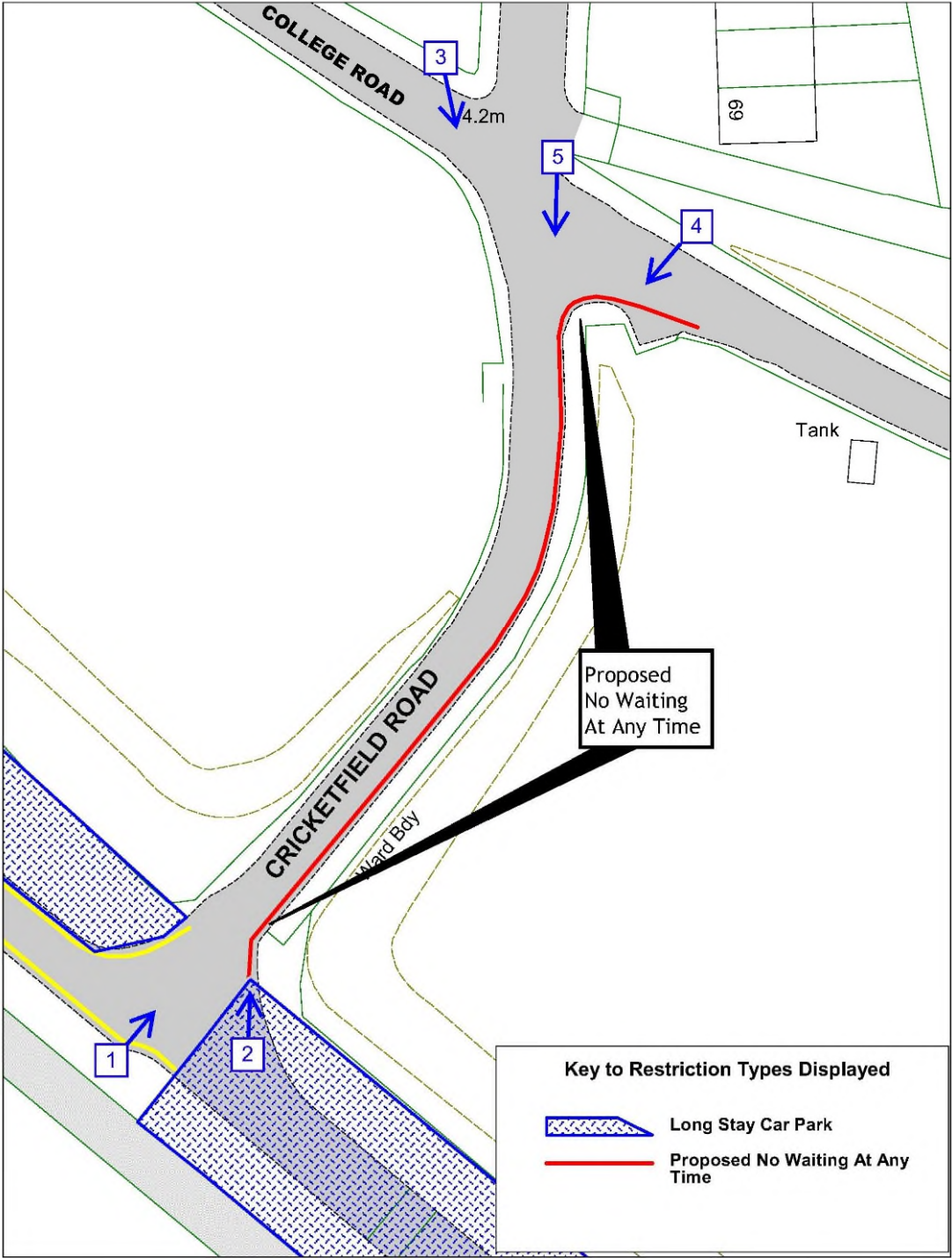
View 1 – Looking west at existing keep clear markings, from north-east corner of Church Street and Place Lane junction



View 2 – Looking south-west, from outside 28 Church Street



Site 3 Cricketfield Road and College Road Seaford





View 2 – Looking north, towards the bus stop, from the eastern corner of the junction of Cricketfield Road and Esplanade.



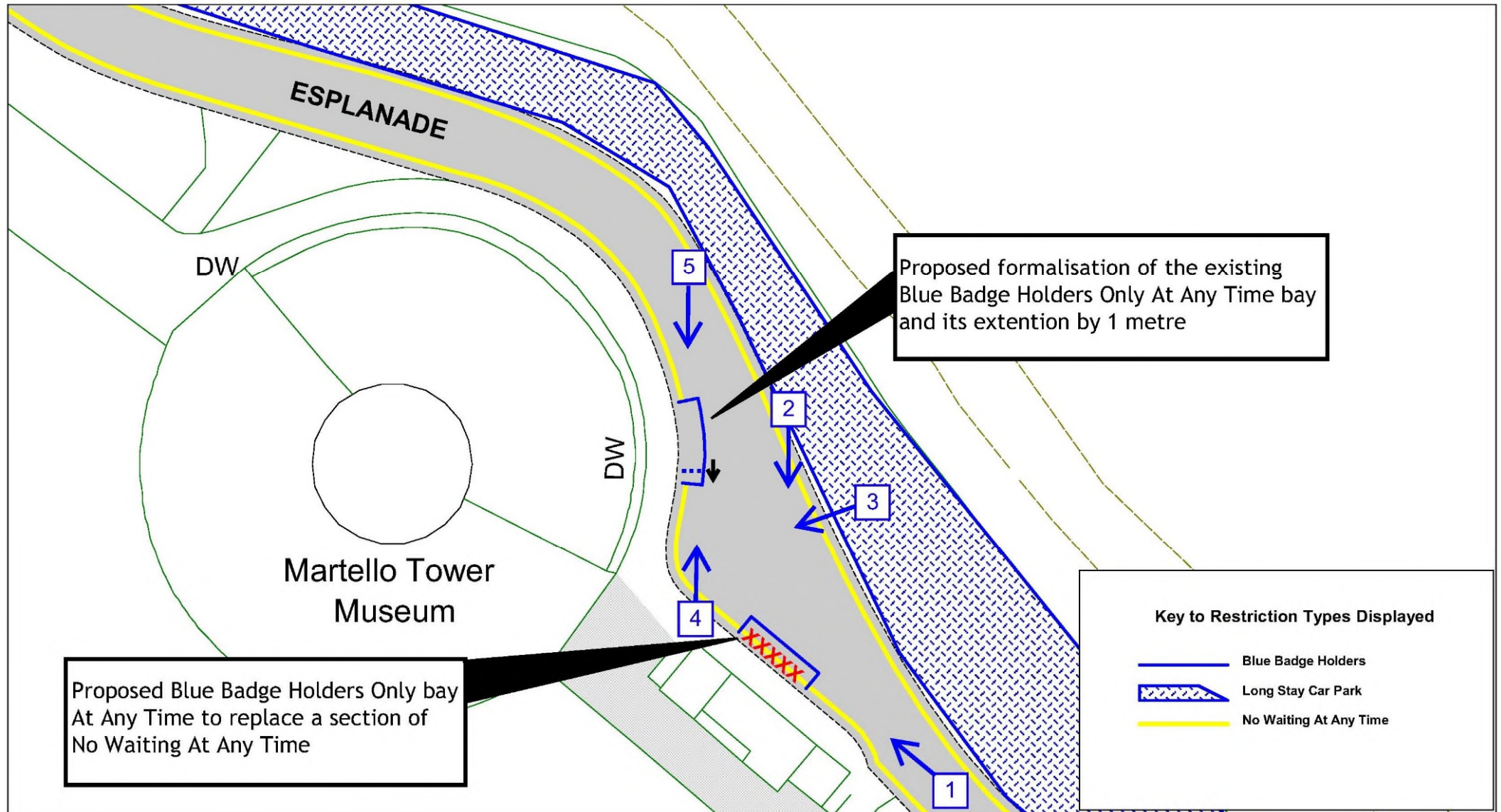
View 3 – Looking south-east from the north side of the junction of Cricketfield Road and College Road





View 5 – Looking south along Cricketfield Road, from the junction of Cricketfield Road and College Road





View 1 – Looking north-west towards Martello Tower Museum, from south-east end of toilet block



View 2 – Looking south at the toilet block, from the opposite side of the road



View 3 – Looking south-west towards the existing blue badge holders only bay, from the opposite side of the road



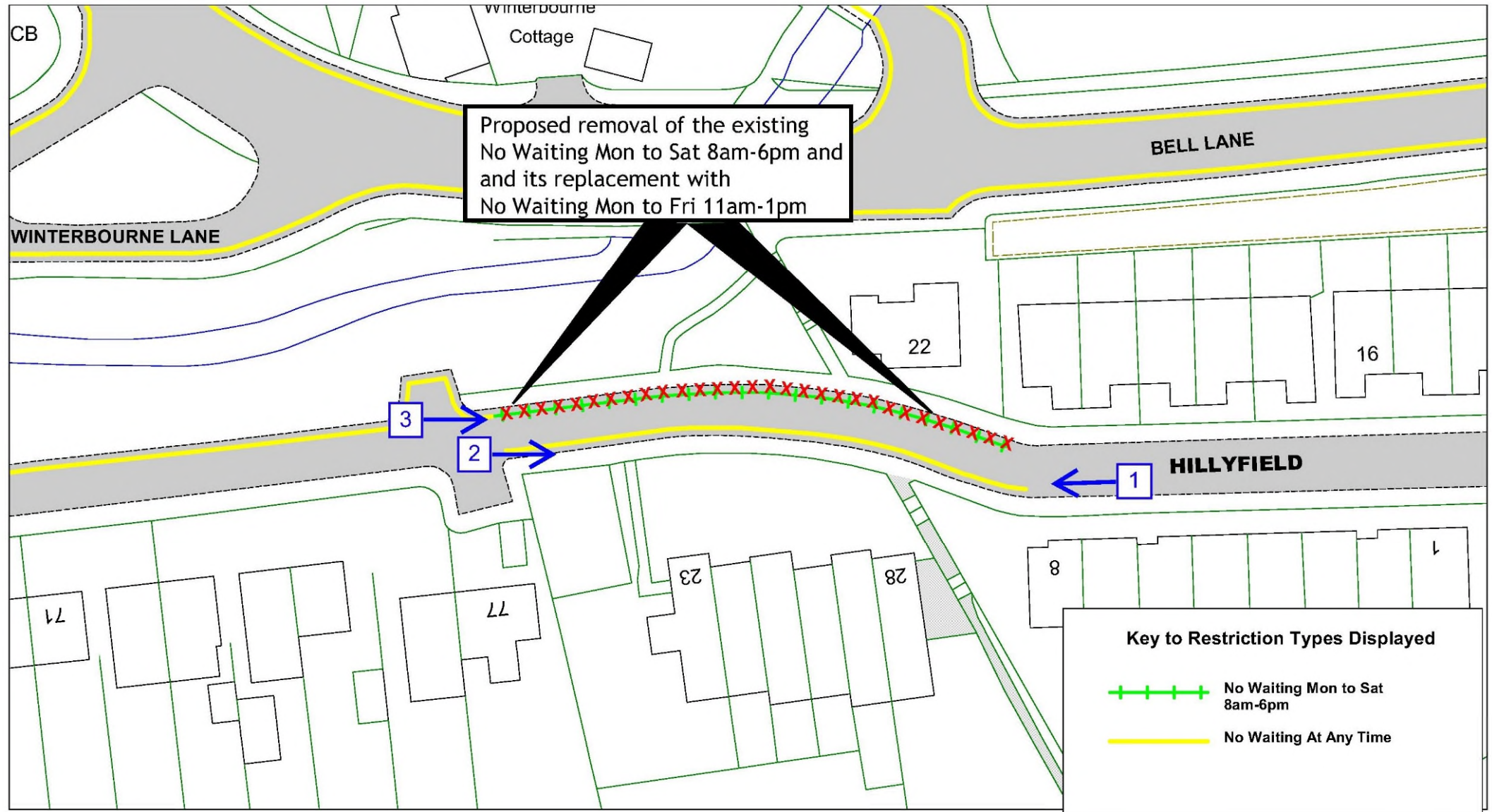
View 4 – Looking North at the existing blue badge holders only bay, from outside the toilet block



View 5 – Looking South at the existing blue badge holders only bay



Site 5 Hillyfield Lewes



View 1 – Looking west along Hillyfield from outside number 8



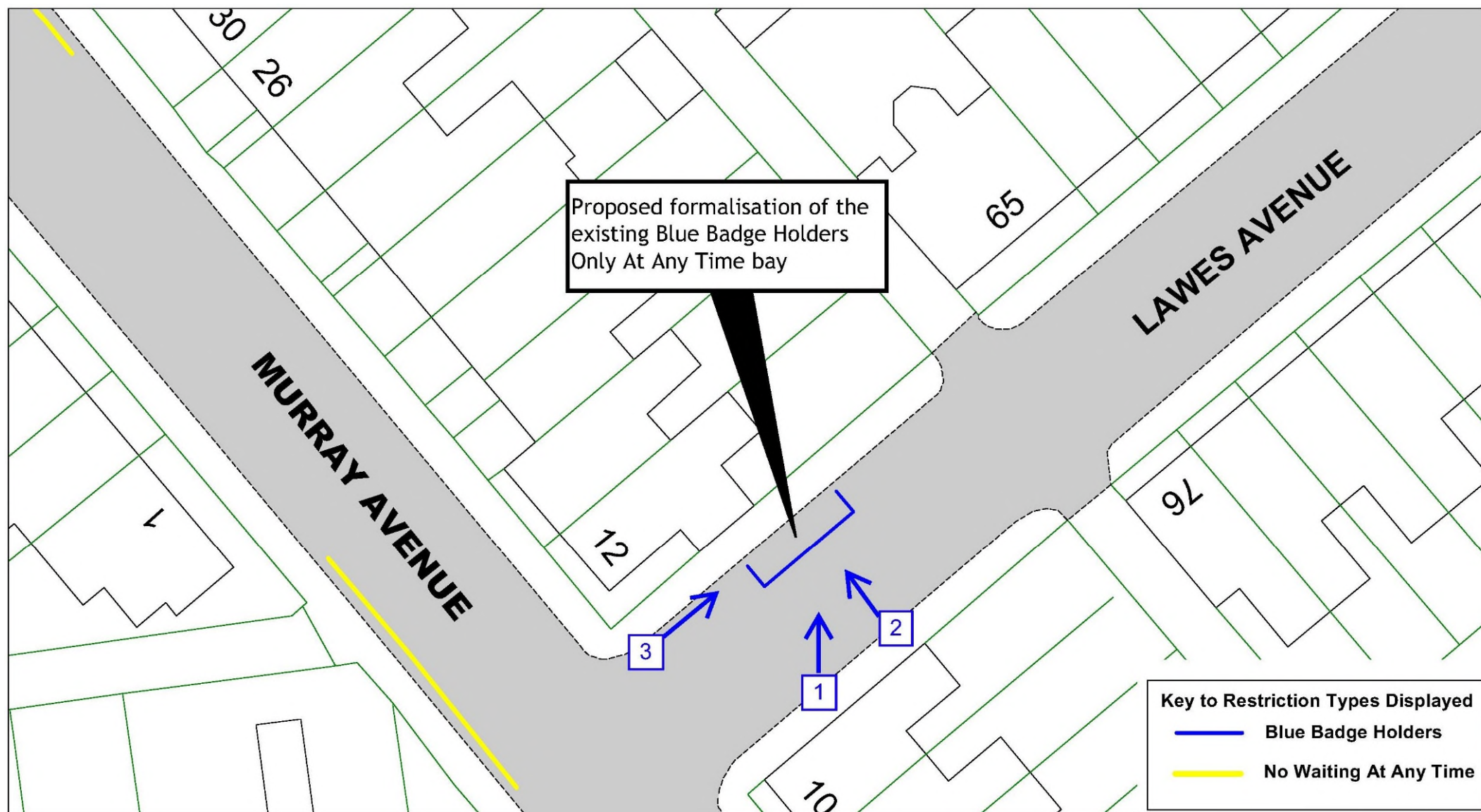
View 2 – Looking east along Hillyfield, from the end of Winterbourne Close, outside number 77 Winterbourne Close



View 3 – Looking east along Hillyfield, from the end of Winterbourne Close, opposite number 76 Winterbourne Close



Site 6 Lawes Avenue Newhaven



View 1 – Looking north from opposite side of Lawes Avenue, from outside 10 Murray Avenue



View 2 – Looking north-west from opposite side of Lawes Avenue, from outside
10 Murray Avenue

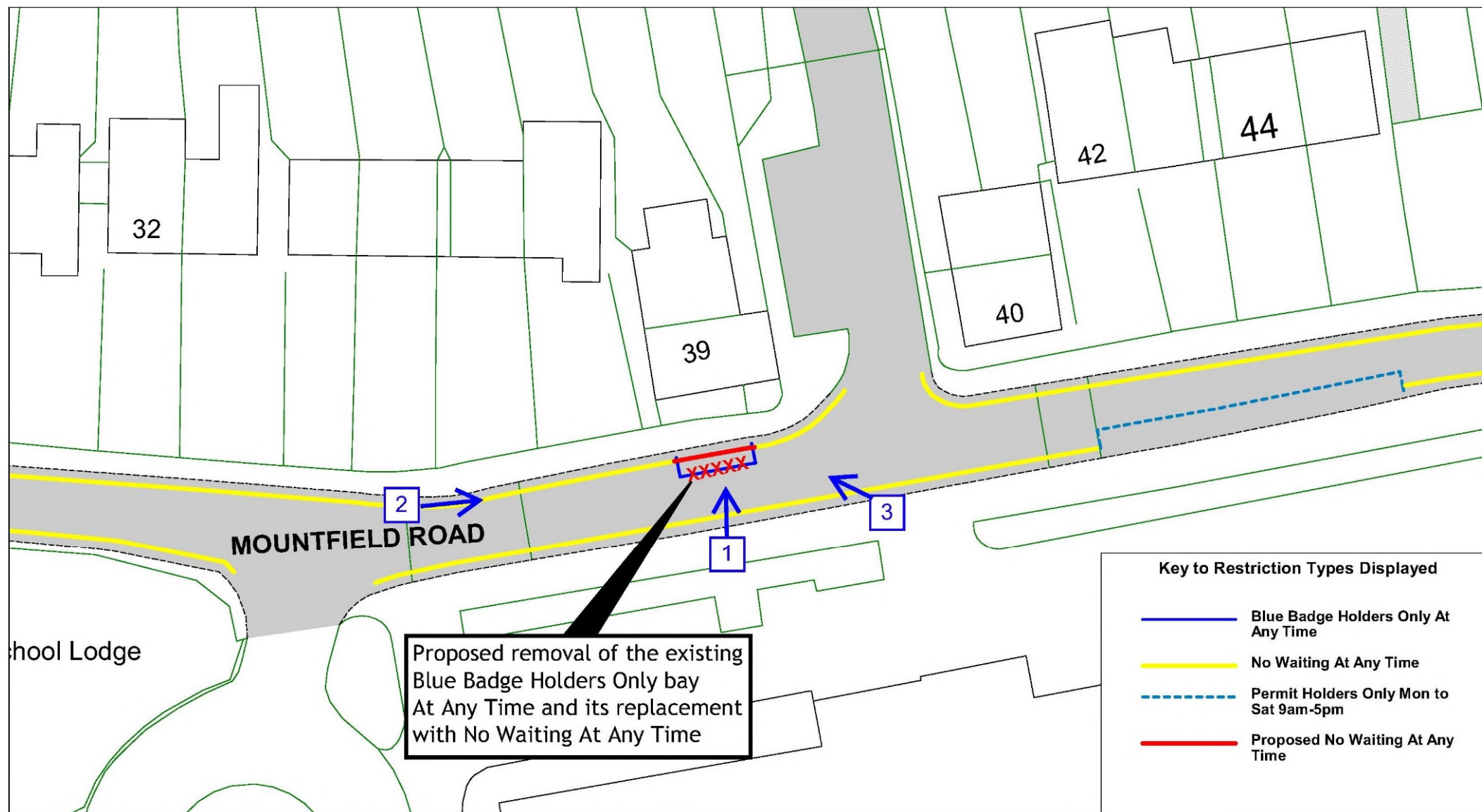
29



View 3 – Looking north-east from the junction of Murray Avenue and the north-west side of Lawes Avenue



Site 7 Mountfield Road Lewes



View 1 – Looking north at the bay from the opposite side of the road



View 2 – Looking east along Mountfield Road from outside number 36



View 3 – Looking north-west from exit of Priory School car park



Traffic Regulation Order: Lewes Parking Review 2022

Objections received to changes to parking and waiting restrictions proposed during the latest parking review in Lewes District